



I WOMEN CMAS SPEARFISHING WORLD CUP

PARTICULAR RULES



I WOMEN CMAS SPEARFISHING WORLD CUP SAGRES, PORTUGAL, 8 SEPTEMBER 2018



PARTICULAR RULES

- 0 - INTRODUCTION
- 1 - ORGANIZATION AND CONTROL
- 2 - REGISTRATION
- 3 - PRESENTATION
- 4 - COMPETITION
- 5 - EQUIPMENT FOR SPEARFISHING
- 6 - MEANS OF CONTROL
- 7 - COMPETITION
- 8 - POINT CALCULATIONS AND VALID CATCHES
- 9 - REGULATORY FRAMEWORK AND SANCTIONS
- 10 - INTERNATIONAL JUDGE - CMAS TECHNICAL DELEGATE
- 11 - ANTI DOPING CONTROL
- 12 - RESPONSIBILITIES
- 13 – ACTIVITIES PROGRAM
- 14 – COMPETITION ZONES AND RESERVE ZONE



0 – INTRODUCTION

• The **I WOMEN CMAS SPEARFISHING WORLD CUP**, it will happen during the **XXXI CMAS WORLD SPEARFISHING CHAMPIONSHIP** in the village of **SAGRES**, allowing the Portuguese Federation to use some of the resources already in position for that organization. Therefore, the organization made a big effort in order to give a really good price to attract and invite the countries to bring women athletes to this competition that we hope to be a start of a new era of this amazing sport, with the participation of women at the same level as man.

1 - ORGANIZATION AND CONTROL

• The Portuguese Federation of Underwater Activities – FPAS propose to CMAS the organization of the **I WOMEN CMAS SPEARFISHING WORLD CUP** which will take place at 8th of September 2018, in the marine zone of Sagres - Portugal.

• In the end of this World Cup, the title of Women World Cup Champion of Spearfishing will be attributed as assigned by CMAS, and the teams title, as well as the largest catch by the organization.

1.1 – WOMEN WORLD CUP PARTICIPATION RULES

Invited countries that will participate in the **I WOMEN CMAS SPEARFISHING WORLD CUP** are the following:

A ZONE - EURO-AFRICAN

1. Portugal (host)
2. Greece
3. Spain
4. Croatia
5. Italy
6. Bulgaria
7. Turkey
8. Ukraine
9. Finland
10. Cyprus
11. Russia
12. Slovenia
13. Tunisia
14. South Africa
15. Denmark
16. San Marino
17. Norway
18. Egypt

B ZONE - PAN AMERICAN

1. Brazil
2. Chile
3. USA
4. México
5. Argentina
6. Ecuador
7. Uruguay
8. Colombia
9. Venezuela

C ZONE- PACIFIC

1. Australia
2. New Zealand
3. Tahiti

List given by CMAS Spearfishing Committee. Valid for registered National Federations keeping up to date their Spearfishing CMAS Committee Membership Payment when formalizing their inscription.



1.2 - COMPETITION COMMITTEE:

• **The International Jury is composed by the Head of the Judges (CMAS Technical Delegate), nominated by the CMAS Executive Board: Mr. Sergio Perez (Spain)**

• The Competition Committee has the function of providing support the CMAS Technical Delegate under request, and it is formed by:

- 1 Competition Director, nominated by the Federation organizer: (Local Comp. Director)
- 2 Members from team Captains elected during the Technical Meeting as advisers.
- 1 Members substitutes from team Captains elected during the Technical Meeting.

• **The technical control will be made by:**

- **The CMAS Technical Delegate: Mr. Sergio Perez**
- **The Competition Director: (Local Comp. Director)**
- The General Secretary:
- The Technical and Safety Judge:
- The Medical Assistance Coordinator:
- The Boat Commissioners Coordinator:
- The Judge for the Protocol Ceremonies:

• **Local Services and Assistance:** Hospital of Portimão, Voluntary Firemen of Vila do Bispo, ISN, IPTM - Porto de Lagos - Sagres, Navy - Coast Gard of Lagos Harbour, Municipality of Vila do Bispo, Clube Vela de Lagos and Clube Recreativo Infante de Sagres.

2 - REGISTRATION

- The registrations will have to be sent by e-mail: fpas@fpas.pt
- or for post office:

FPAS - Federação Portuguesa de Actividades Subaquáticas
RUA DO ALTO LAGOAL, N° 21 A
2760 - 003 CAXIAS
OEIRAS – PORTUGAL

• Each National Federation in due registration with Sports Committee of the CMAS will be able to inscribe its National Team, formed by: 3 competitors, 1 reserve athlete, 1 team captain (who could be one of the four athletes) and 1 doctor of the team.

• The representatives of each country must be older than eighteen years hold and they must have the nationality of the country they represents in the World Cup. They must send for every member of the team: first name, name and CMAS Sports License Number. They must bring flags and the anthem of their own country in electronic file or cd.

• The organization will take place in: Hotel Baleeira - <http://www.memmohotels.com>,

• The organization as developed the following contacts for accommodations with special competition conditions:

Accommodation contacts	Website	Email
Memmo Baleeira	http://www.memmohotels.com/baleeira/	monica.ribeiro@memmohotels.com
Pousada de Sagres	https://www.pousadas.pt/pt/hotel/pousada-sagres	x
Apartments Pontalaia	www.pontalaia.pt	info@pontalaia.pt
Aparthotel Navigator	www.aparthotelnavigator.com	hotel.navigator@mail.telepac.pt
Sagres Time Apartments	www.sagrestime.com	reservas@sagrestime.com



- The cost of participation of each nation is defined in accordance with the number of elements of national team as per the table below and the total fee includes inscription, boats, souvenirs, opening and gala dinners, With or Without Accommodation:

Registration Quotas:

N° of national team competitors	With Accommodation (half board for four (4) nights)			Without Accommodation		
	Value of total registration	1 st Payment up to 30-06-2018	2 ^o Payment up to 06-08-2018	Value of total registration	1 st Payment up to 06-06-2018	2 ^o Payment up to 06-08-2018
4	3.200,00 €	1.600,00 €	1.600,00 €	2.000,00 €	1.000,00 €	1.000,00 €
3	2.600,00 €	1.300,00 €	1.300,00 €	1.200,00 €	600,00 €	600,00 €
2	2.000,00 €	1.000,00 €	1.000,00 €	800,00 €	400,00 €	400,00 €
1	1.200,00 €	600,00 €	600,00 €	400,00 €	200,00 €	200,00 €

Note 1: The organization may decide to use one boat per team.

Note 2: For those nations that do not meet the deadlines for registration, the organization will not guarantee the provision of boats for every athlete, as well as accommodation. Getting these logistics is the responsibility of the national team and the subsequent accreditation by the organization is mandatory.

Note 3: The Organization will take responsibility exclusively to the representatives of the enrolled nations (3 competitors, one reserve, 1 captain and 1 Doctor or Delegate), from 14h00 of 6th of September of 2018 until 11h00 of 10th of September of 2018. The Organization will not assume any incumbency with the companions of the enrolled nations and declines all the responsibility concerning accommodation, security, covering for insurance, etc. However a discount is available if this service is required with the inscription and reserve of accommodations of the national team.

- **The inscription form of each participant nation must contain the name and date of birth of each element of the team. The inscription form must have 2 photos of each element, perfectly identified or in alternative a digital photo.**

- **It is only considered a valid inscription the ones that fulfils with the following formalities:**

1. Reception of the inscription form of the participant nation followed by the first payment, correspondent to 50% of the value foreseen in the table above, function of the chosen option, **before 30th of June of 2018.**

2. Reception of the inscription form of the competitors and attached documentation, followed by the payment, correspondent to the remaining 50% of the value foreseen in the table above, function of the chosen option, **before 6th of August of 2018.**

3. **All athletes must have a valid CMAS Licence and a personal accident insurance (can be provided with the CMAS licence)**

4. Presentation of the “Sportive License of the CMAS” for national competitors, inside of the stated period of validity.

3 - PRESENTATION

- The competitors must present themselves until 18h00 of 6th of September of 2018, in the recreation port of Sagres, Portugal, to confirm its definitive registration. At this moment they will receive the complementary documents and instructions



4 - COMPETITION

- The I WOMEN CMAS SPEARFISHING WORLD CUP will occur in one day, of 5 hours, on a described maritime area in the annexes “World Cup Zone” and “World Cup Reserve Zone”. There will be one zone of competition and a reserve zone.
- If during the competition the meteorological conditions are degrading or for majeure force the organization to consider necessary to reduce the prescribed time, for security reasons, the World Cup will be valid if had at least a duration of 2/3 of the time foreseen for day, as occurred, that is 3 hours and 20 minutes. The total suspension of a competition day is of the strict responsibility of the CMAS Technical Delegate. During the continuation of a competition day, the partial suspension is of the ability of the Competition Director and CMAS Technical Delegate.
- The competitors will have to use the official transport (boats), whether provided by the Organization, whether provided by the national teams themselves, ensuring that their boats are previously accredited by the organization. The organization bans the use of any other means of transport. The FPAS will seek to ensure the allocation of a boat to athletes who do not possess one, and eventually to the team captains. The boats availability and their distinguishing characteristics may determine the need for groups of similar boats for the participants. Boats will be allocated to teams by lottery to be held during the Meeting of Delegates. Each captain has a responsibility to make the distribution of boats allocated by competitors.
- The competition zones cannot be visited in the eve of the Competition, that is, in September 6th. During the period of recognition, the visit to the competition zones will be made by ways of transport of the national team’s responsibility.
- Two weeks (14 days) before the competition it is strict forbidden to fish in the competition zones, witch will result in exclusion. The same applies to the use of scuba diving equipment and the underwater, to the members of the participant teams or to its assistants and companions.

5 - EQUIPMENT FOR SPEARFISHING

5.1 - Only the use of the following equipment is allowed:

1. One or more spear guns of rubber bands or pneumatic, set in motion solely for muscular force of the competitor and without external help.
2. Fins, masks, gloves, flashlights, breather tubes, ballast belts, harpoons and hooks, knives, suits, deep gauge, compass and GPS.
3. Each competitor will be able to use its own buoy, but he is mandatory to keep the official buoy with its number in the water.
4. Free diver Recovery Vest. In order for this equipment to be permissible, team captains must inform the CMAS Technical Delegate about the athletes of their teams that intend to use this particular equipment during a particular day of the competition. The Compressed gas (CO2) capsule of the vest will be initialled by the CMAS Technical Delegate and inspected after each competition day. If capsule is not presented by athlete for inspection or has released the gas, the athlete will be disqualified for the day.

5.2- It is forbidden:

1. Transport fish in any place, witch is not the buoy or the boat.
2. To load or to have a loaded spear gun out of the water.
3. To have a loaded spear gun in the buoy or on board.

6 - MEANS OF CONTROL

- The organization will supply to each competitor official buoy at the moment of the definitive registration, at September 6th of 2018. The use of the official buoy is mandatory. For no reason the competitor, can leave behind the use of the official buoy or move away more then 25 meters.
- The organization will supply to each competitor the bags to keep the captures.



7 - COMPETITION

7.1 - The orders of beginning and end of competition will be given by the Competition Director.

7.2 - It is forbidden to the competitors to move of boat. In the case of it damages, Commissioner-Boatman will give knowledge of the situation to the Competition Director, which, fastest possible, will make to repair or to substitute the boat. However, the competitor will be able to continue to fish, without moving away more than 25 meters from the official buoy.

7.3 - Any protest on the substituted boat, will not be accepted.

7.4 - Commissioner-Boatman, when manoeuvring the boats, must prevent to disturb other competitors and remain away from these and ask, if necessary, to other Commissioner-Boatman, which is the localization of its competitor, to prevent any accident or disturbance.

7.5 - The function of Commissioner-Boatman is to lead the boat and at the same time, to watch for the fulfilment of the rules. These must supply to the competitor, when this is in the water, the equipment that will be requested that will be on the boat, also has to keep the captures in the respective bag, and if the competitor to ask for, can accept to remove the capture of the harpoon if it's not considered dangerous.

7.6 - Commissioner-Boatman cannot make rifle loading.

7.7 - All captures seen at the surface, must be brought the boat, and will be registered by the Commissioner-Boatman, if not, a penalty will.

7.8 - Commissioner-Boatman cannot recover from the deep, weapons, belts of ballast or any another equipment part of the competitor, as well as harpooned captures.

7.9 - It is forbidden to make circles with the boats, with the engine working to provoke the entrance of the fish in holes, as well as disturbing intentionally the fishing zone of other competitors.

7.10 - If by fatigue, sickness or any another cause, the competitor want to abandon the competition, he must go direct to its boat and ask for Commissioner-Boatman to get the Competition Director authorization to leave. The captures made until this moment will be valid for scoring.

7.11 - On board the boats of the Organization and during the competition the following signals will be used:

Red flag: order of assistance, emergency.

Flag of truce and sonorous signal: End of the competition.

7.12 - Only accredited boats by the organization can move in the competition zone.

7.13 - When sound signal of competition end is herd, the competitors will have to stop to fish and immediately go to its boat. Any capture that is not the surface in the moment of competition end, is not considered valid, and cannot be present to the weighing.

8 - POINT CALCULATIONS AND VALID CATCHES.

8.1 - The point calculation will be made in two phases:

First phase (PC - Classic Points)



1. The pointing in groups I, II and III, is made by attribution of a point per gram of each valid capture, plus the bonus and penalties. To the captures of groups I, II and III, the maximum points for the weight is of 12.500 points. However, for attribution of the trophy “the greatest catch”, will be had in account the real weight of the capture, even if it exceeds the 12.500 grams.
2. The bonus for valid capture is 500 points for species, for all groups.
3. There will be a bonus of 500 points per each specie, with valid catches, for all groups.
4. There will be a bonus of 1.000 points for completing the max number of catches allowed for every specie (called also “Cupo”).
5. There are penalties of captured units weighing less then minimum weight of capture of the respective group.
6. **The captures of *Ephinephelus Marginatus* known as Mero, Grouper, Chernia, Mérour, ARE STRICTLY FORBIDDEN by Portuguese Legislation.**
7. For the attribution of the number of points it will only be considered a valid catch, species that are listed in the following four groups:

Group I

Portuguese	Scientific	French	English	Spanish
Sargo	<i>Diplodus sargus</i>	Sar	White sea bream	Sargo
Sargo bicudo	<i>Diplodus puntaz</i>	Sar a mus eau pointue	Sharpen out sea bream	Sargo picudo
Safia	<i>Diplodus vulgaris</i>	Vidriade	Two banded sea bream	Mojarra
Oblada	<i>Oblada melanura</i>	Oblade	Saddled seabream	Oblada
Ferreira	<i>Lithognathus mormyrus</i>	Marbré	Striped seabream	Herrera
Bica	<i>Pagellus erythrinus</i>	Pageau	Becker	Breca
Tainha	<i>Liza sp.</i>	Mulet	Mullet	Lisa
Salema	<i>Sarpa salpa</i>	Saupe	Goldline	Salema
Faneca	<i>Trisopterus minutus</i>	Tacaud	Poor-cod	Mollera
Badejo (bacalhau)	<i>Pollachius pollachius</i>	Lieu jaune	Pollack	Abadejo
Salmonete	<i>Mullus barbatus</i>	Rouget	Red mullet	Salmonete
Ruivo	<i>Trigla lyra</i>	Grondin	Gurnard	Rubio
Baila / Varia	<i>Dicentrarchus punctatus</i>	Bar tache	Spotted sea bass	Baila
Cavala / Sarda	<i>Scomber sp.</i>	Maquereau	Mackerel	Caballa
Chicharro / Carapau	<i>Trachurus sp.</i>	Chinchard	Jack mackerel	Chicharro
Rascasso	<i>Scorpaena sp.</i>	Rascasse	Scorpion fish	Rascacio
Choupa	<i>Spondylisoma cantharus</i>	Dorade grise	Black sea bream	Chopra
Xaputa	<i>Brama brama</i>	Grande castagnole	Ray's bream	Japuta
Besugo	<i>Pagellus sp.</i>	Pageot	Red sea bream	Besugo
Agulha	<i>Belone belone belone</i>	Orphie	Garfish	Aguja
Judia	<i>Coris julis</i>	Girelle	Rainbow wrasse	Julia
Corba	<i>Sciaena umbra</i>	Corb	Brown meagre	Corba, Corvallo
Verrugato	<i>Umbrina cirrosa</i>	Ombrine	Shi drum	Verrugato
Preguiçosa	<i>Kyphosus incisor</i>	Calicagére Jaune	Yellow Chub	Choupa Amarilla
Garoupa da pedra	<i>Serranus cabrilla</i>	Serran impérial	Blacktail comber	Serrano imperial
Garoupa de rolo	<i>Serranus atricauda</i>	Serran Comum	Learned rockfich	Cabrilla
Boga	<i>Boops boops</i>	Bogue	Bogue	Boga

Minimum weight for valid catch: 500 grams.

Minimum weight of capture: 330 grams.

Penalty: -500 points.

Maximum number of captures authorized per day: 12 per specie.



Group II

Portuguese	Scientific	French	English	Spanish
Bodião	<i>Labrus sp.</i>	Vieille	Wrasse	Lábridos Pintos Maragotas
Saima	<i>Diplodus cervinus cervinus</i>	Sar tambour	Zebra sea bream	Sargo breado
Lírios	<i>Seriola sp.</i>	Liche, seriole	Amber jack	Limón
Robalo	<i>Dicentrarchus labrax</i>	Bar, loup	Sea bass	Lubina
Barracuda	<i>Sphyraena sphyraena</i>	Barracuda	Barracuda	Barracuda
Abrótea	<i>Phycis phycis</i>	Mostelle	Rockling	Lota, brotola
Pargo legitimo	<i>Pagrus pagrus</i>	Pagre	Common seabream	Pargo
Pargo Dourado	<i>Dentex dentex</i>	Denté	Dentex	Denton
Pargo Sêmea	<i>Pagrus auriga</i>	Pagre rayé	Redbanded seabream	Urta
Pargo Capatão	<i>Dentex gibbosus</i>	Denté bossu	Pink dentex	Sama de pluma
Dourada	<i>Sparus aurata</i>	Dorade royale	Gilt-head bream	Dorada
Serrajão	<i>Sarda sarda</i>	Bonite, pélamide	Atlantic bonito	Bonito Atlántico
Anchova	<i>Pomatomus saltator</i>	Tassergal	Bluefish	Anjova
Badejo Quadrado	<i>Epinephelus costae</i>	Mérou jaune	Golden grouper	Falso abadejo
Badejo da Ilha	<i>Microperca fusca</i>	Mérou d'île	Island grouper	Abadejo
Enxaréu	<i>Pseudocaranx dentex</i>	Carangue Dentue	Silver Trevally	Jurel
Veja	<i>Sparisoma cretense</i>	Perroquet	European parrotfish	Vieja
Peixe Cão	<i>Bodianus scrofa</i>	Pourceau	Barred Hogfish	Pejeeperro
Pargo Mulato	<i>Plectorhinchus mediterraneus</i>	Diagramme Burro	Rubberlip grunt	Burriquete

Minimum weight for valid catch: 700 grams.

Minimum weight of capture: 460 grams.

Penalty: -700 points.

Maximum number of captures authorized per day: 12 for species.

Group III

Portuguese	Scientific	French	English	Spanish
Corvina	<i>Argyrosomus regius</i>	Maigre	Meagre	Corbina
Dourado	<i>Coryphaena sp.</i>	Coryphene	Dolphinfish	Dorado
Peixes de bico	<i>Xiphias spp, Makaira spp</i>	Espadon	Swordfish,	Marlin
Wahoo (Cavala das Indias)	<i>acanthocybium solandri</i>	Wahoo	Wahoo	Wahoo
Cherne	<i>Epinephelus americanus</i>	Cernier	Wreckfish	Cherna

Valid minimum weight: 5.000 grams.

Minimum weight of capture: 3.330 grams.

Penalty: -5.000 points.

Maximum number of captures authorized per day: 2 for species.



Group IV

Portuguese	Scientific	French	English	Spanish
Safio	<i>Conger conger</i>	Congre	Conger eel	Congrio
Moreia	<i>Muraena sp</i>	Murène	Moray eel	Morena
Pampo	<i>Balistes capriscus</i>	Baliste	Grey triggerfish	Baliste
Alfaquim	<i>Zeus Faber</i>	Saint Pierre	John Dori	San Pedro

Minimum weight for valid catch for Conger: 5.000 grams.

Minimum weight for valid catch for Moray: 2.000 grams.

Minimum weight for valid catch for Grey triggerfish or John Dori: 1.000 grams.

Minimum weight for catch for Conger: 3.330 grams.

Minimum weight for catch for Moray: 1.330 grams.

Minimum weight for catch for Grey triggerfish or John Dori: 660 grams.

Points for unit of Moray or Conger captured: 2.000 points.

Points for unit of Grey triggerfish or John Dori captured: 1.000 points.

Penalty for Conger or Moray: -2.000 points.

Penalty for Grey triggerfish or John Dori: -1.000 points.

Maximum number allowed captures per day for Conger or Moray: 3 per species.

Maximum number allowed captures per day for Grey triggerfish or John Dori, 2 per species.

For all the groups:

- By each fish exceeding the established limit of pieces of the particular species, it will be ignored in weighing and the two heavier catches of the species will be removed, and the corresponding bonus. Example: If you to take 13 White sea bream for weighing, the 2 greatest, are removed and only 11 remain.
- The calculation of the punctuation will be gotten by the algebraic addition of the number of the weight in gram of the captures, plus the bonus and penalties.
- For weighing it will only be considered the catch by competitors of live specimens in their natural environment and in perfect freedom. It will not be counted viscera or parts of fish that are not fixed to the capture physiologically.

Second phase (PP - Percentile Points)

- The classic points (PC) of each competitor will be transformed into percentile punctuation (PP), having in account the maximum punctuation gotten by the winner of the day.
- To the competitor with more (PC) points, 100 (PP) points will be attributed. To the other competitors the percentile punctuation will be attributed (PP), rounded off to the third house decimal, in accordance with the following formula:

Formula:
$$\frac{\text{Punctuation of day} \times 100}{\text{Punctuation of the first one}}$$

8.2 - The final classification.

- The classification will be made by PP.
- The final classification will be made by the addition of the PP of the two days.
- The final classification by team's will be made by addition of all his athletes points.



9 - REGULATORY FRAMEWORK AND SANCTIONS

During the World Cup, the national teams and their members must follow these Particular Rules and the CMAS Spear Fishing General Rules. In particular:

The competitors of the national teams must know and respect Spearfishing CMAS rules, as well as these Particular Rules and local Portuguese laws.

The CMAS Technical delegate, Director of Competition and Commissars, will be in charge to enforce respect of the rules. After the boat commissars or the competition director's communication to CMAS Technical Delegate of any wrongful behaviour, the CMAS Technical delegate will decide a WARNING or a DISQUALIFICATION (for the whole competition).

9.1 - Discipline

9.1.2 - Behaviours punishable with a WARNING:

1. To arrive late at the control points planned by the Organization.
2. For incorrect behaviour towards other competitors or the Judges.
3. To move away more than 25 meters from his official buoy.
4. To load or to maintain his spear gun in load position on ground or on the support boat.
5. To have a means of signal indication not in conformity with the Rules.
6. To not declare to have caught the total number allowed for a certain species of fish, as stated in the Particular Rules.
7. During the time of competition, go out of the limits of the competition zone up to a distance where this could be considered as accidental and not intentional.
8. To have obtained help to recover the buoy or the mobile ballast.
9. Any athlete that presents his captures in a bag with or without water, different than the one provided by the organization, its fishes should be weighted at the end of the weighing performance after removing the bag and the water.

9.1.3 - Behaviours punishable with DISQUALIFICATION:

1. Two warnings of CMAS Technical Delegate for any reason / behaviour in the same day must be immediate disqualification.
2. Carrying fish in the belt or keeping catches at any place out of boat or official buoy.
3. To return after the finish time for the end of the competition without major force justification: time to return to be established according to length of zone and sea conditions.
4. During the time of competition, go out of the limits of the competition zone beyond a distance where this is considered as intentional.
5. The athlete that presents a higher number of catches with penalty than valid catches weighed.
6. Leave the competition zone before end of day of competition or without passing check control of arrival, without getting permission of CMAS Technical Delegate or Director of Competition, through Boat Commissar demand.
7. To stay in sea after the official time of day of competition, even not accepting the signals of end of time from Boat Commissar.
8. To be dragged by boat in the water against the current.
9. To use the Free diver Recovery Vest without notification of the CMAS Technical Delegate and initialling of its gas capsule.
10. To inflate the Free diver Recovery Vest or not to present its gas capsule for inspection after the end of each competition day.
11. The inflation of the Free diver Recovery Vest, even if accidental.

9.1.4 - Behaviours punishable with TOTAL DISQUALIFICATION (Deleted from official classification):

1. Aggression towards other Competitors, the Judges or the Members of the Organization.



2. To fish species prohibited by the Portuguese national legislation.
3. Replacement of the catches of the regulated species or exchanged between athletes.
4. Return or leave in water catches of any kind / category: not valid, forbidden or valid species of any weight.
5. To be in the Competition Zone, with or without spear gun, before the Official start time in the dates of competition or precedent day.
6. To use any type of scuba diving or breathing apparatus.
7. Infringement of any fishing local law.
8. Collaboration (other than communication between the boats of the same team) among participants except for security reasons.
9. Weighing fraud.
10. During official time of competition as well as along the official period of zone visit before championship is totally forbidden, under punishment of disqualification in competition:
 - a. **Use of exploding punts, and / or any gadget with explosive power.**
 - b. **Use of spear guns of explosive gas or any system witch is not charged by human physical effort.**
 - c. **Use any diving breathing system. This is spearfishing in apnoea only.**
 - d. **Use of submarine propeller gadgets as “torpedo”.**
11. All those who committed offences before the beginning of the competition will not be allowed to take part in the competition.

9.2 - Complaints

1. Participants have the right to make a complaint to the Jury.
2. Only the Team's Captain can make the complaint.
3. All complaints must be accompanied by a € 100 deposit, fixed by CMAS.
4. A complaint must be presented in writing to the CMAS Technical Delegate (using English, French or Spanish) during the following periods:
 - a. Before the weighing time
 - b. During the weighing
 - c. Regarding a classification error, the complaint must be notified to the Competition Director or to the CMAS Technical Delegate (with the 100€ deposit) within 15 minutes following the Classification publication in order to postpone the award ceremony.
 - d. It will be a fixed period of an hour for writing and presenting the complaint form to the CMAS Technical Delegate, once the oral complaint intention was communicated.
 - e. Otherwise the complaint will be null and void, and the money on deposit will not be refunded.
5. The complaint will be valid in case the requirements are met.
6. The 100€ deposit will be refunded if the complaint is accepted.

10 - INTERNATIONAL JUDGE - CMAS TECHNICAL DELEGATE

- For CMAS Competition the CMAS Technical Delegate is nominated by the Spearfishing Commission and ratified by the CMAS A.C. He has full control and authority over all the officials. He must approve their assignments and give them instructions with regard to the Particular Rules relating to the competitions.
- He must make to apply the Rules and the decisions of CMAS and solve all the questions concerning the effective organization that is not referred to in the Specific Competition Rules.
- He authorises the responsibility to give the starting signal after having been ensured that all the members of the College of Judges are in place and ready.
- The CMAS Technical Delegate has the right to cancel or suspend the competition, even without the opinion of the Competition Committee, in the event of unfavourable weather conditions or if the place of competition or the installations do not fulfil the requirements of the Rules.

11 - ANTI DOPING CONTROL

- In the end of 1st and 2nd day of the competition, anti-doping control will be made.



12 - RESPONSIBILITIES

• The World Confederation of Underwater Activities (CMAS), and the Portuguese Federation of Underwater Activities (FPAS), as well their Representatives and Collaborators, the Competition Director and the Judges, cannot be held responsible for the damage which could be caused with the materials and with the goods for the participants, nor for the accidents which could occur with the competitors and other participants, as result of their inscription in the Sports Competition and particularly in the Underwater Competitions.

• The official registration of the competitors compels to accept them, always and without reserve the made use one in this regulation, as well as other complementary instructions defined by the Organization, with the authorization of the CMAS Technical Delegate.

13 – ACTIVITIES PROGRAM

I WOMEN CMAS SPEARFISHING WORLD CUP

SAGRES 2018

PROGRAM (provisional)

September 6th 2018

15H00-19H00 Reception
20H00 Diner

September 7th 2018

08H00-09H00 breakfast Hotel
09H30 Technical Meeting (Captains Meeting)
11H00 Meeting of Boat Commissioners
13H00 Lunch
15H00 Departure for local Tour
17H30 Opening Ceremony
19H00 Cocktail
20H00 Diner

September 8th 2018

07H00-07H30 Breakfast Hotel
08H00 Depart Marina of Sagres
09H30 Concentration in the sea Zone of competition
10H00 Beginning of competition
15H00 End of competition
17H00 Weighing
20H00 Diner

September 9th 2018

XXXI CMAS SpearFishing World Championship
19H00-19H30 CMAS Delivering Prize Ceremony
21H00 Diner and closing

September 10th 2018

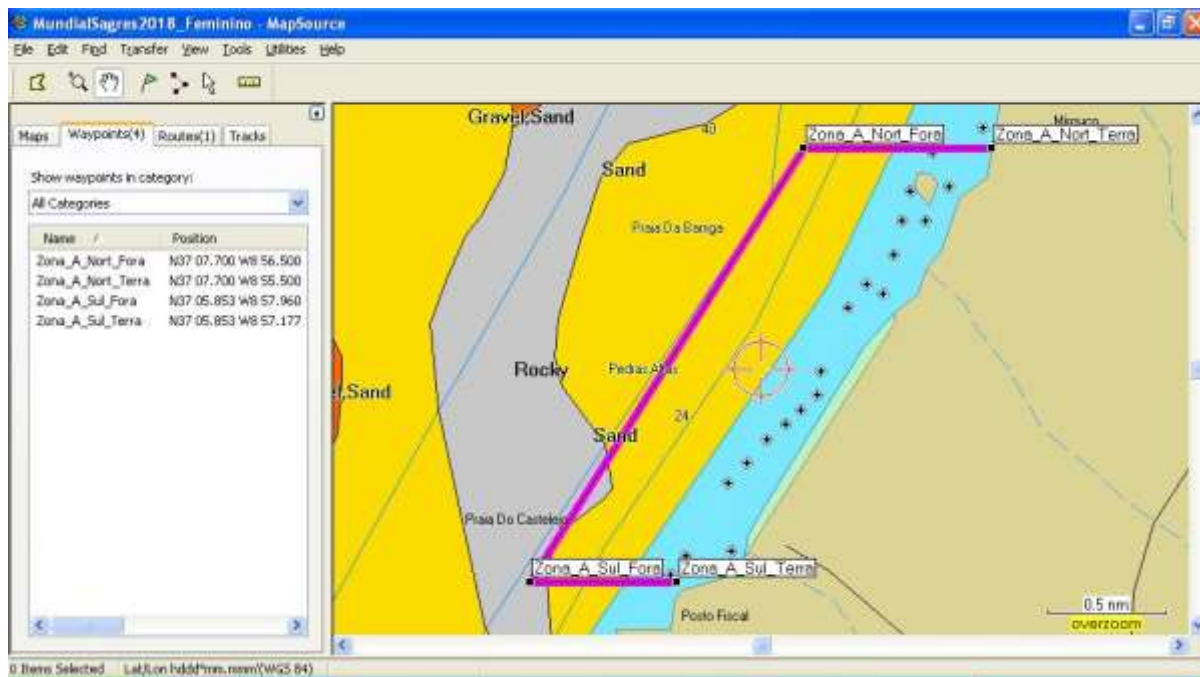
07H00-11H00 Depart to Airport



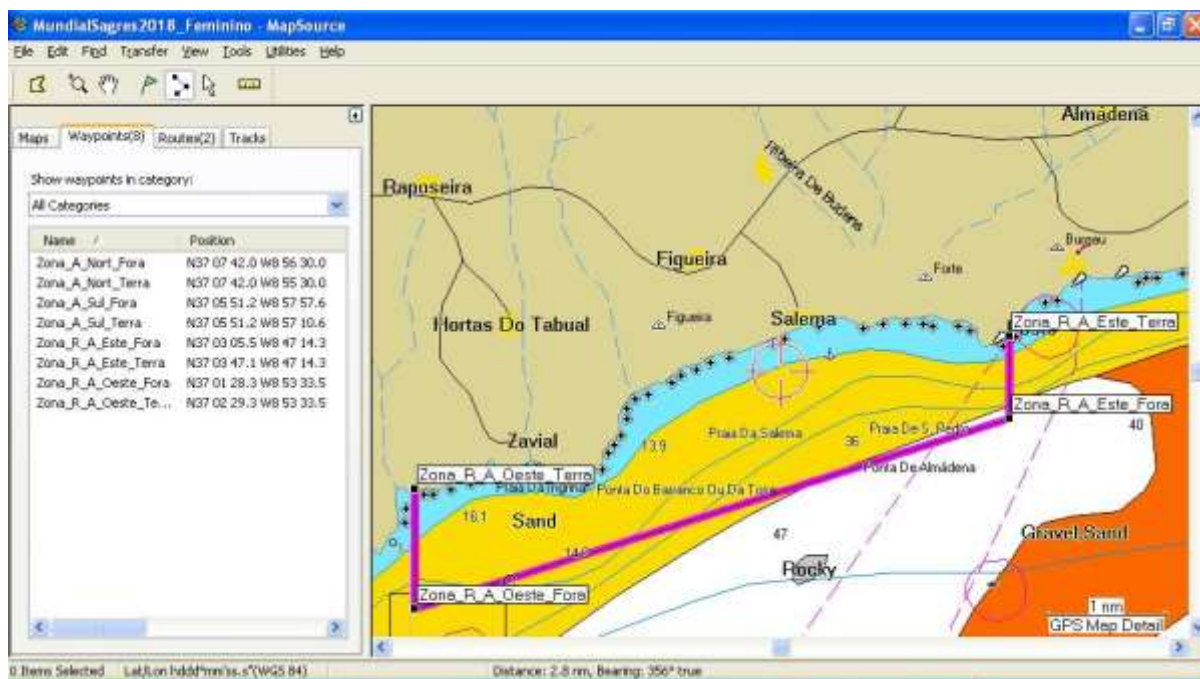
14 – COMPETITION ZONES AND RESERVE ZONE

I WOMEN CMAS SPEARFISHING WORLD CUP SAGRES 2018

[Competition Zone]



[Competition Reserve Zone_A]





[Competition Reserve Zone_B]

